

# PICMG 1.3 Passive Backplane

## Selection Guide

PAC series wall-mount Chassis
4U Rack-mount Chassis
2U Rack-mount Chassis

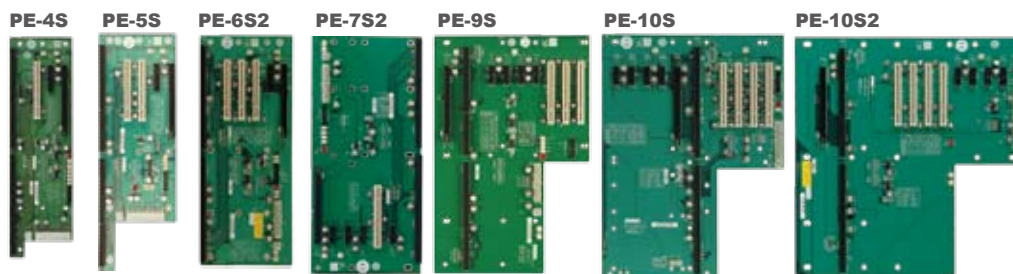
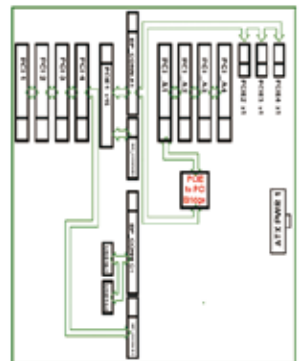
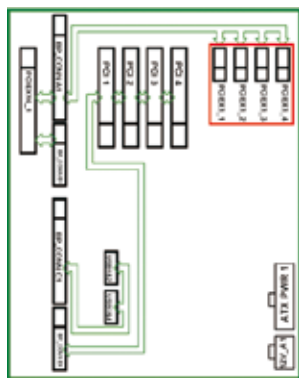
PICMG1.3 (PCIe+PCI)	Model	PE-4S	PE-4S2	PE-4S3	PE-5S	PE-5S2	PE-6S	PE-6S2	PE-6S3	PE-6SD	PE-6SD2
Total Slot		4	4	4	5	5	6	6	6	5	5
Expansion Slots	PCIe SLOTS	x16 *	1	1	1	1	1	1	1	1	1
		x4	1		1			1			
	PCI SLOTS			2		3	2		3	3	2
USB Connectors by Pin Header		1	2		2		2	3	1		1
PSU TYPE		24+4 PIN ATX	24+4 PIN ATX	24+4 PIN ATX	24+4 PIN ATX	24+4 PIN ATX	24+4 PIN ATX	24+4 PIN ATX	24+4 PIN ATX	24+4 PIN ATX	24+4 PIN ATX
Chassis		PAC-42GF-R20 PACO-504F	PAC-42GF-R20 PACO-504F	PAC-42GF-R20 PACO-504F	RACK-500G-R20	RACK-500G-R20	RACK-305G-R20 RACK-360G-R20 RACK-814G-R20 RACK-3000G-R20 RACK-1700G-R20 PAC-125G-R20	PAC-106G-R20 *1 PAC-107G-R20 *1 PAC-1000G-R20 PACO-506F	PAC-1000G-R20 PACO-506F	RACK-221G RACK-2100G	RACK-221G RACK-2100G
Note										2U Type	2U Type

PICMG1.3 (PCIe+PCI)	Model	PE-7S	PE-7S2	PE-8S	PE-9S	PE-10S	PE-10S2	PE-13SD	PE-16SD	PXE-13S	PXE-19S
Total Slot		7	7	8	9	10	10	13	16	13	19
Expansion Slots	PCIe SLOTS	x16 *	1	1	1	1	1	1/1	1/1/1/1	1	1
		x4						1/0	1/1/1/1		
	PCI SLOTS		2	4	3	4	4	0/4	0	3	1
USB Connectors by Pin Header		3	1	3	3	4	4	2/2	1/1/1/1	8	16
PSU TYPE		4	4	4	4	4	4	8	4/4/4/4	4	4
PSU TYPE		24+4 PIN ATX	24+4 PIN ATX	24+4 PIN ATX	24+4 PIN ATX	24+4 PIN ATX	24+4 PIN ATX	Dual 24+4 PIN ATX	Three 20+4 Pin ATX One 24+4-pin ATX	24+4 PIN ATX	24+4 PIN ATX
Chassis		PAC-1700G-R20	PAC-1700G-R20	PAC-125G-R20	N/A	RACK-305G-R20 RACK-360G-R20 RACK-814G-R20 RACK-3000G-R20	RACK-3000G-R20 RACK-305G-R20 RACK-360G-R20 RACK-814G-R20	RACK-3000G-R20 RACK-305G-R20 RACK-360G-R20 RACK-814G-R20	RACK-4000-R20	RACK-3000G-R20 RACK-305G-R20 RACK-360G-R20 RACK-814G-R20	RACK-3200G-R20 RACK-3035G-R20
Note								Dual System Backplane	Quad System Backplane	PCIe to PCI Bridge backplane	

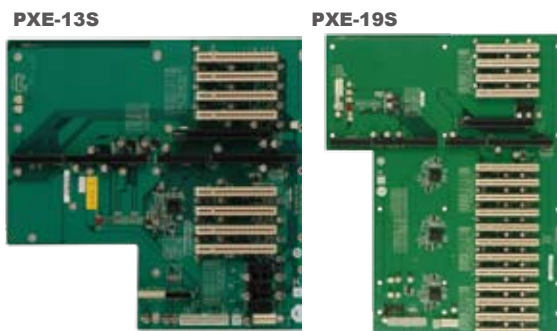
\*1: when using a PCIe x16 add-on card, the length of the card must not exceed 167mm or 6.57inches.

## IEI Graphic Grade Backplane Solution

Graphic centric backplane targets at applications which concerning system speed and performance. It has higher performance over cost ratio than previous PICMG1.0 solution.

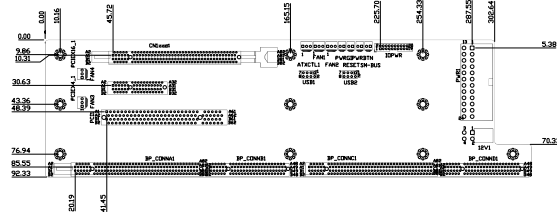


- 20 PCIe Lanes Total
- One PCIe x16 Slot
- Up to four PCIe x1 or One PCIe x4 Slot
- Up to four Local PCI Slots (w/o Bridge)



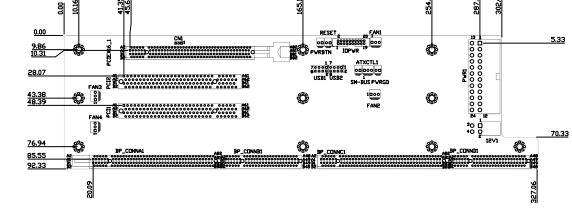
- 20 PCIe Lanes Total
- One PCIe x16 Slot
- Up to Four PCIe x1 Slots
- Up to 4 Local PCI Slots
- PCI Slots Expandable via PCIe to PCI Bridge

**Mounting holes  
compatible with PCI-4S**



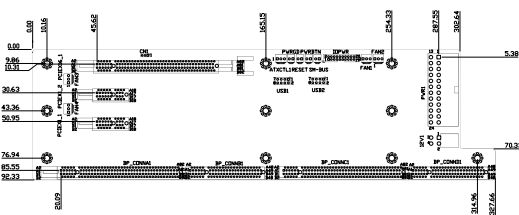
PE-4S-R40	4-slot backplane with 1 PCIe x16 slot, 1 PCIe x4 slot and 1 PCI slot
PAC-42GF-R20	4-slot full-size industrial chassis
PACO-504F	4-slot full-size industrial chassis

**Mounting holes  
compatible with PCI-4S**



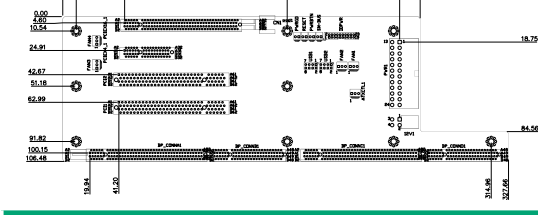
PE-4S2-R40	4-slot backplane with 1 PCIe x16 slot and 2 PCI slots
PAC-42GF-R20	4-slot full-size industrial chassis
PACO-504F	4-slot full-size industrial chassis

**Mounting holes  
compatible with PCI-4S**



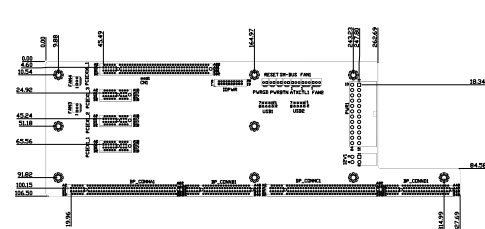
PE-4S3-R40	4-slot backplane with 1 PCIe x16 slot and 2 PCIe x1 slots.
PAC-42GF -R20	4-slot full-size industrial chassis
PACO-504F	4-slot full-size industrial chassis

**Mounting holes  
compatible with PCI-5S**

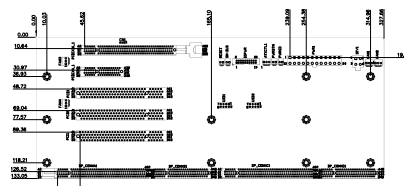


PE-5S-R40	5-slot backplane with 1 PCIe x16 slot, 1 PCIe x4 slot and 2 PCI slots
RACK-500G-R20	5-slot full-size industrial chassis

**Mounting holes  
compatible with PCI-5S**



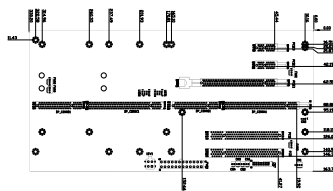
PE-5S2-R40	5-slot backplane with 1 PCIe x16 slot and 3 PCIe x1 slots
RACK-500G-R20	5-slot full-size industrial chassis



PE-6S2-R40	6-slot backplane with 1 PCIe x16 slot, 1 PCIe x4 slot and 3 PCI slots
PAC-106G-R20	6-slot full-size industrial chassis
PAC-107G-R20	6-slot full-size industrial chassis
PAC-1000G-R20	6-slot full-size industrial chassis
PACO-506F	6-slot full-size industrial chassis

### PE-6S-R40

Mounting holes  
compatible with PCI-7S



#### Ordering Information

PE-6S-R40	6-slot backplane with 1 PCIe x16 slot, 2 PCIe x1 slots and 2 PCI slots
RACK-305G-R20	4U rack-mount industrial chassis
RACK-360G-R20	4U rack-mount industrial chassis
RACK-814G-R20	4U rack-mount industrial chassis
RACK-3000G-R20	4U rack-mount industrial chassis
PAC-1700G-R20	7-slot full-size industrial chassis
PAC-125G-R20	10-slot full-size industrial chassis

### PE-6SD-R40

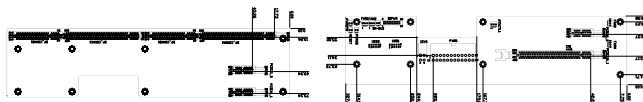
Mounting holes  
compatible with PCI-6SD

2U Type



Right side

Left side



#### Ordering Information

PE-6SD-R40	5-slot backplane with 1 PCIe x16 slot and 3 PCIe x1 slots
RACK-221G	6-slot full-size industrial chassis
RACK-2100G	6-slot full-size industrial chassis

### PE-6SD2-R40

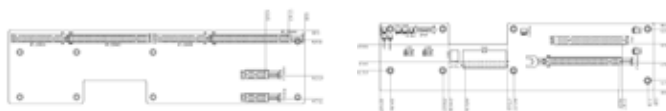
Mounting holes  
compatible with PCI-6SD

2U Type



Right side

Left side

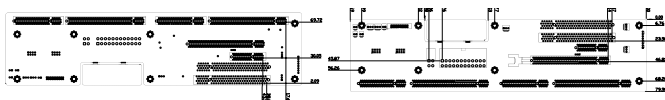


#### Ordering Information

PE-6SD2-R40	5-slot backplane with 1 PCIe x16 slot, 2 PCIe x1 slots and 1 PCI slot
RACK-221G	6-slot full-size industrial chassis
RACK-2100G	6-slot full-size industrial chassis

### PE-6SD3-R40

Mounting holes  
compatible with PCI-6SD

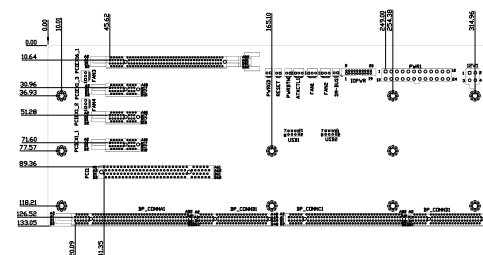


#### Ordering Information

PE-6SD3-R40	5-slot backplane with 1 PCIe x16 slot, 1 PCIe x4 slots and 2 PCI slots
RACK-221G	6-slot full-size industrial chassis
RACK-2100G	6-slot full-size industrial chassis

### PE-6S3-R40

Mounting holes  
compatible with PCI-6S



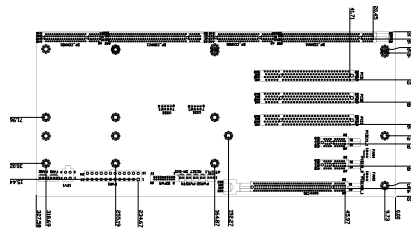
#### Ordering Information

PE-6S3-R40	6-slot backplane with 1 PCIe x16 slot, 3 PCIe x1 slots and 1 PCI slot
PAC-106G-R20	*1 6-slot full-size industrial chassis
PAC-107G-R20	*1 6-slot full-size industrial chassis
PAC-1000G	6-slot full-size industrial chassis
PACO-506F	6-slot full-size industrial chassis

\*1: when using a PCIe x16 add-on card, the length of the card must not exceed 167mm or 6.57inches.

### PE-7S-R40

Mounting holes  
compatible with PCI-7S

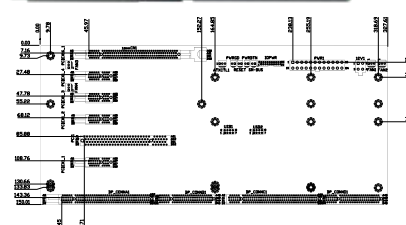


#### Ordering Information

PE-7S-R40	7-slot backplane with 1 PCIe x16 slot, 2 PCIe x1 slots and 3 PCI slots
PAC-1700G-R20	7-slot full-size industrial chassis

### PE-7S2-R40

Mounting holes  
compatible with PCI-7S

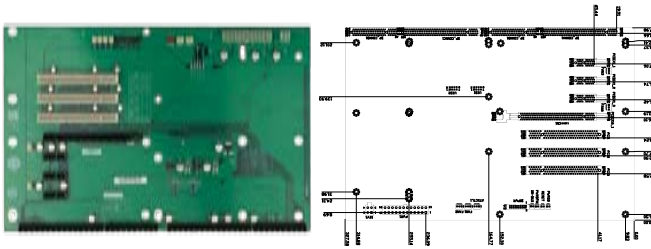


#### Ordering Information

PE-7S2-R40	5-slot backplane with 1 PCIe x16 slot and 4 PCIe x1 slots and 1 PCI slot
PAC-1700G-R20	7-slot full-size industrial chassis



## PE-8S-R40

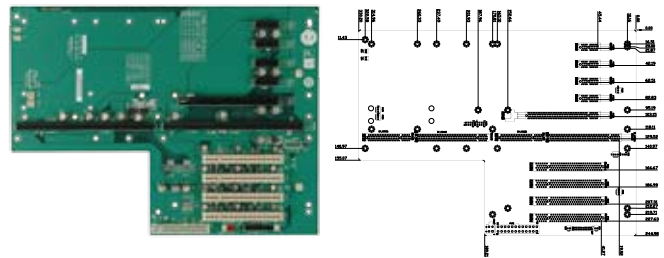


### Ordering Information

PE-8S-R40 8-slot backplane with 1 PCIe x16 slots, 3 PCI x1 slots and 3 PCI slots  
 PAC-125G-R20 10-slot full-size industrial chassis

## PE-10S-R40

Mounting holes  
compatible with PCI-14S

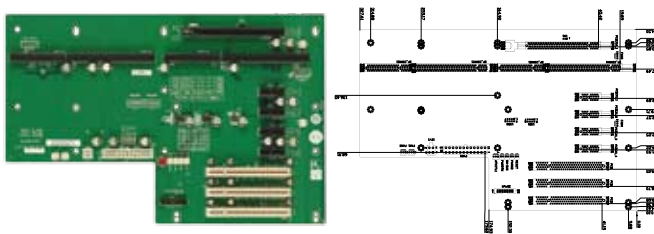


### Ordering Information

PE-10S-R40 13-slot backplane with 2 PCIe x16 slots, 1 PCIe x4 slot,  
 4 PCI x1 slots and 4 PCI slots  
 RACK-305G-R20 4U rack-mount industrial chassis  
 RACK-360G-R20 4U rack-mount industrial chassis  
 RACK-814G-R20 4U rack-mount industrial chassis  
 RACK-3000G-R20 4U rack-mount industrial chassis

## PE-9S-R40

Mounting holes  
compatible with PCI-10S2

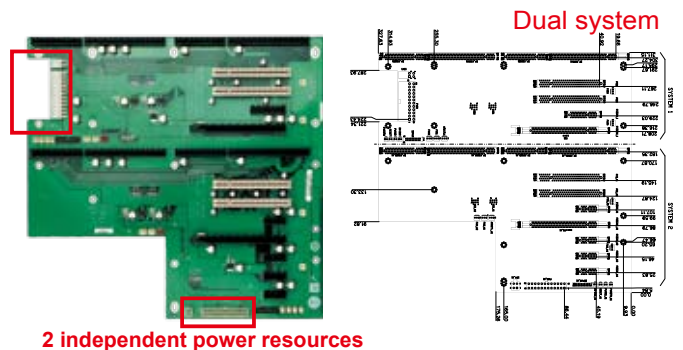


### Ordering Information

PE-9S-R40 9-slot backplane with 1 PCIe x16 slot, 4 PCIe x1 slots and 3 PCI slots

## PE-13SD-R40

Mounting holes  
compatible with PCI-14S



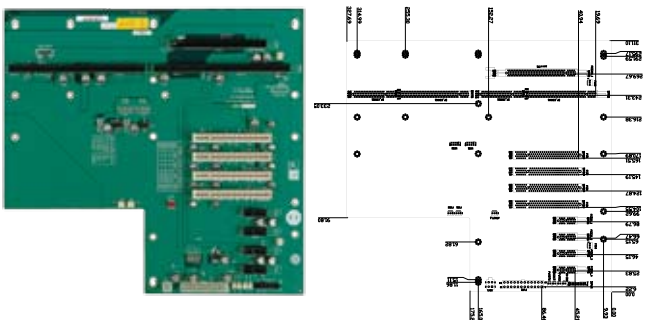
2 independent power resources

### Ordering Information

PE-13SD-R40 13 Slots Backplane with 2 PCIe x 16 and 1 PCIe x 4 and  
 4 PCIe x 1 and 4 PCI slot.  
 RACK-3000G-R20 14-slot full-size industrial chassis  
 RACK-305G-R20 14-slot full-size industrial chassis  
 RACK-360G-R20 14-slot full-size industrial chassis  
 RACK-814G-R20 14-slot full-size industrial chassis

## PE-10S2-R40

Mounting holes  
compatible with PCI-14S

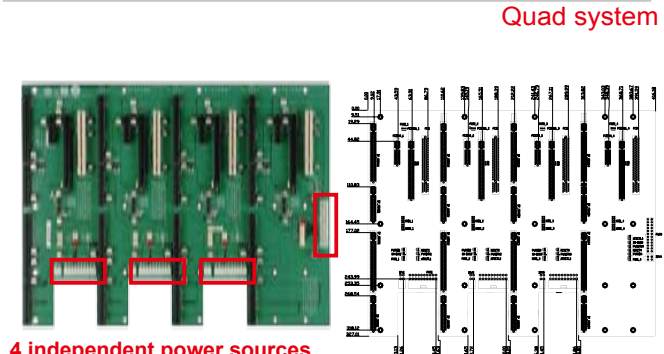


### Ordering Information

PE-10S R40 10-slot backplane with 1 PCIe x16 slot, 1 PCIe x1 slot and  
 4 PCI slots  
 RACK-3000G-R20 14-slot full-size industrial chassis  
 RACK-305G-R20 14-slot full-size industrial chassis  
 RACK-360G-R20 14-slot full-size industrial chassis  
 RACK-814G-R20 14-slot full-size industrial chassis

## PE-16SQ-R10

Mounting holes  
compatible with PCI-18QS



4 independent power sources

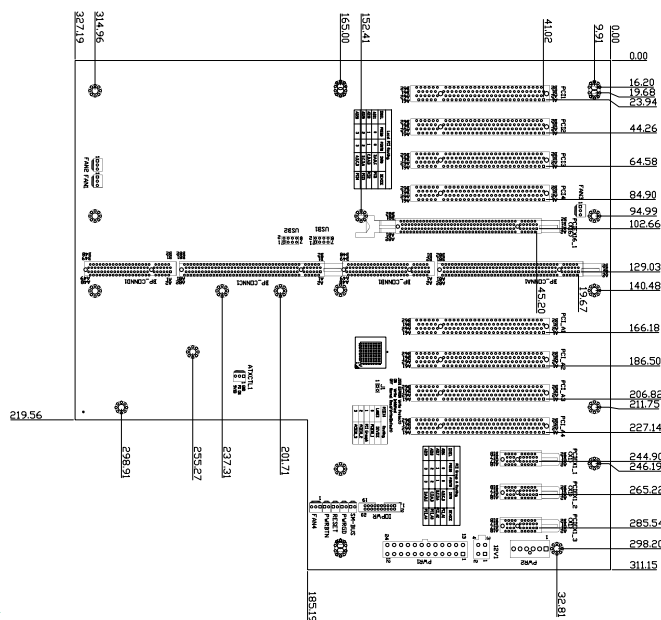
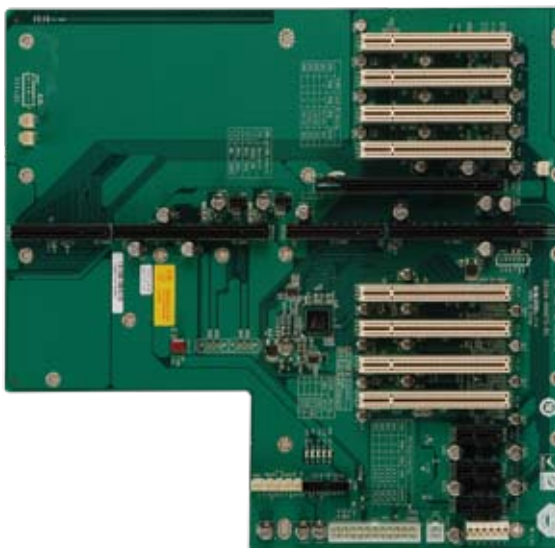
### Ordering Information

PE-16SQ-R10 4-system backplane with each system having 1 PCIe x1 slot,  
 PCIe x4 slot and 1 PCI slot  
 RACK-4000-R20 4U 20-slot full-size industrial chassis

# PXE-13S-R40

Mounting holes  
compatible with PCI-14S

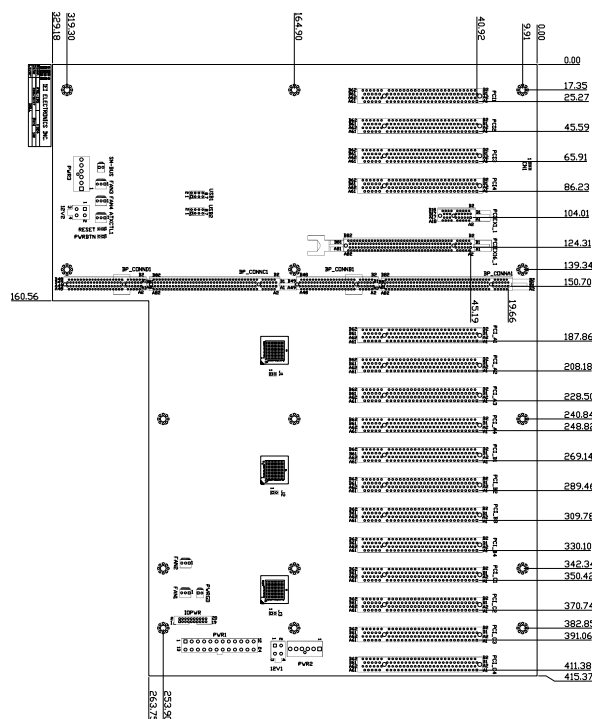
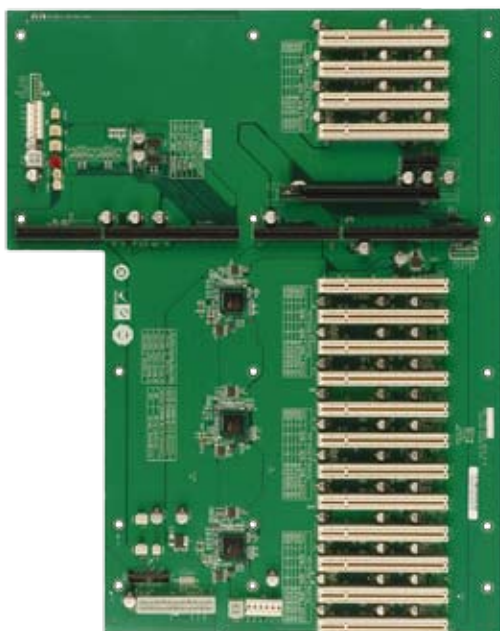
(PCIe to PCI Bridge)



## Ordering Information

PXE-13S-R40	13-slot backplane with 1 PCIe x16 slot, 3 PCIe x1 slots and 8 PCI slots
RACK-3000G-R20	14-slot full-size industrial chassis
RACK-305G-R20	14-slot full-size industrial chassis
RACK-360G-R20	14-slot full-size industrial chassis
RACK-814G-R20	14-slot full-size industrial chassis

# PXE-19S-R40

Mounting holes  
compatible with PCI-19S

## Ordering Information

PXE-19S-R40	19-slot backplane with 1 PCIe x16 slot, 1 PCIe x1 slot and 16 PCI slots
RACK-3200G-R20	4U 20-slot full-size industrial chassis
RACK-3035G-R20	7U 20-slot full-size industrial chassis